

Close Print

[\[previous\]](#)

- [High-Resolution Image](#) (1592KB)

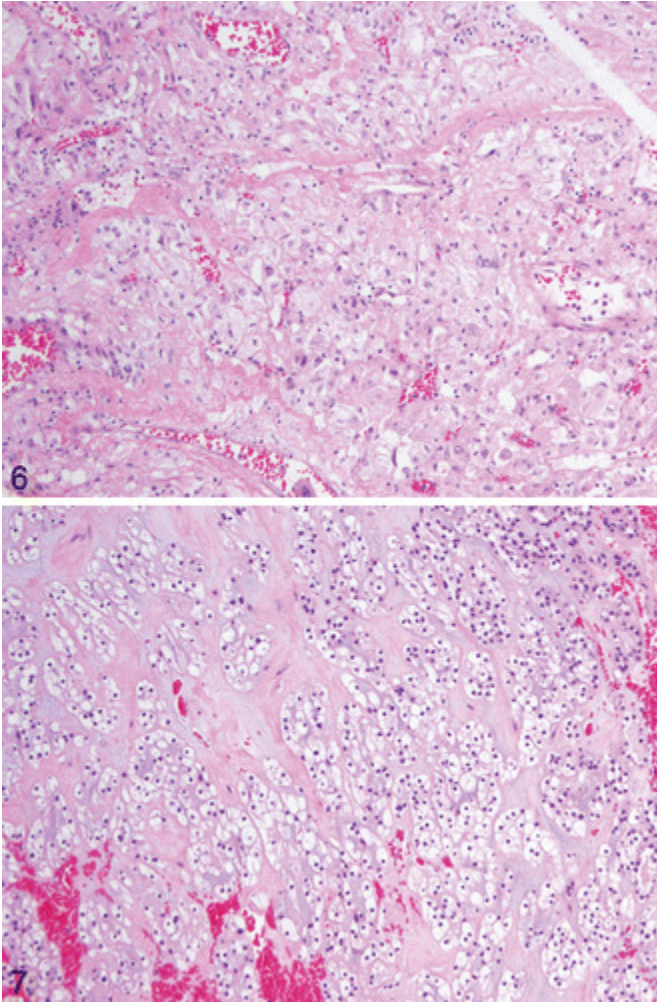


Figure 6.

In some cases of epithelioid angiomyolipoma there is a superficial resemblance to clear cell renal cell carcinoma. The vasculature in epithelioid angiomyolipoma is typically characterized by thick-walled hyalinized vessels (hematoxylin-eosin, original magnification $\times 200$).

Figure 7. Rarely, in renal oncocytomas one may see cytoplasmic clearing as shown in this case. This is usually a focal finding that is present in areas of stromal hyalinization (hematoxylin-eosin, original magnification $\times 100$).

[\[previous\]](#)