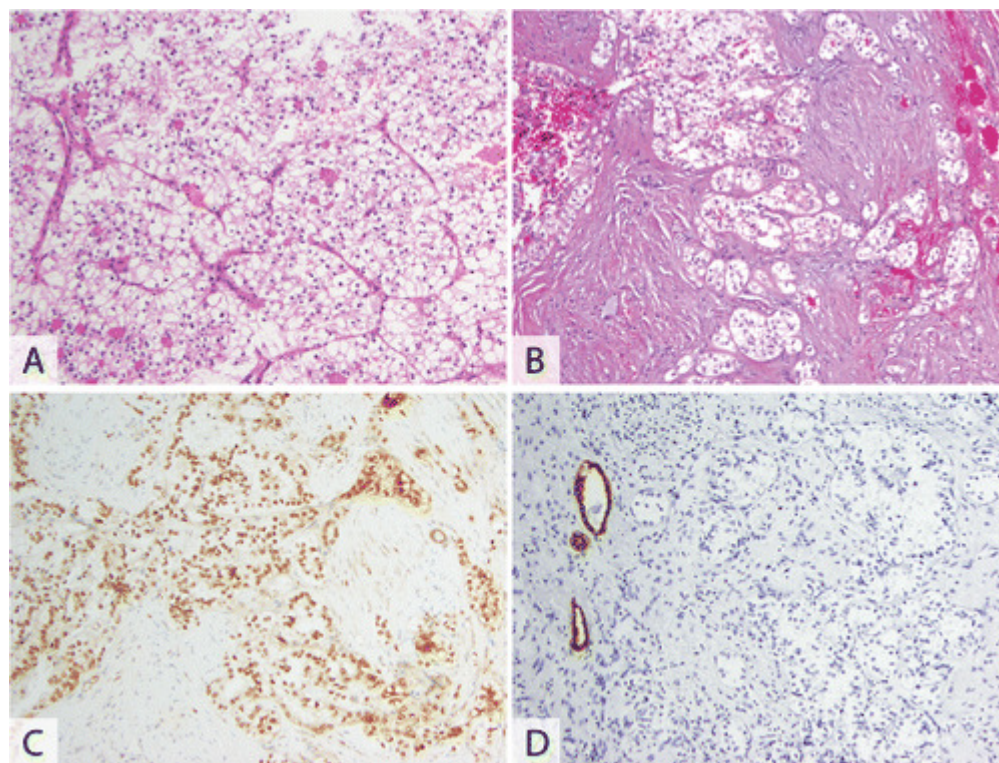


[Close](#) [Print](#)[\[previous\]](#) [\[next\]](#)

- [High-Resolution Image](#) (1166KB)

**Figure 5.**

An example of a TFE3-associated translocation carcinoma with clear cell features. A, Low-power examination reveals morphologic overlap with clear cell renal cell carcinoma in this case. B, In some areas a nested growth pattern and hemorrhage are present. C, Diffuse strong nuclear labeling for TFE3 is characteristic of these tumors. D, Negative or patchy labeling for epithelial membrane antigen (EMA)—which would be unusual in other types of renal cell carcinoma—is often a helpful finding (hematoxylin-eosin, original magnifications $\times 100$ [A and B]; original magnifications $\times 100$ [C and D]).

[\[previous\]](#) [\[next\]](#)