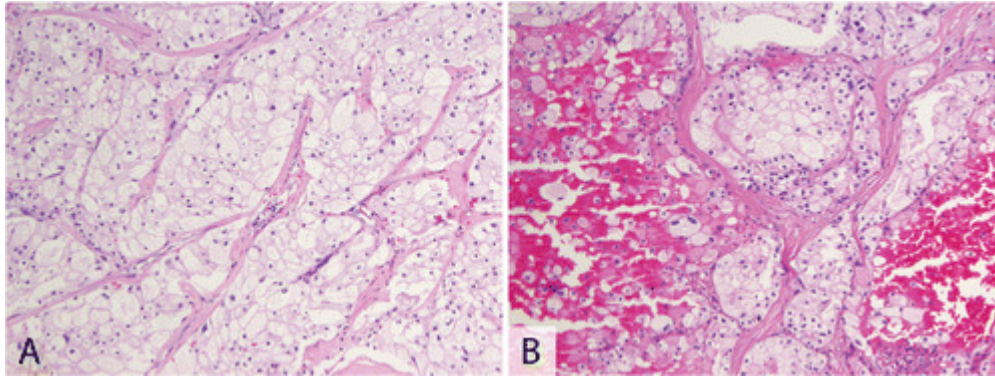


Close Print

[\[previous\]](#) [\[next\]](#)

- [High-Resolution Image](#) (567KB)



**Figure 3.**

Chromophobe renal cell carcinoma can have a predominance of clear cells. A, Note the incomplete vascular septae and prominent cell borders. B, On occasion, cases can exhibit diffuse hemorrhage, mimicking the “bloody glands” appearance associated with clear cell renal cell carcinoma (hematoxylin-eosin, original magnifications  $\times 100$  [A and B]).

[\[previous\]](#) [\[next\]](#)