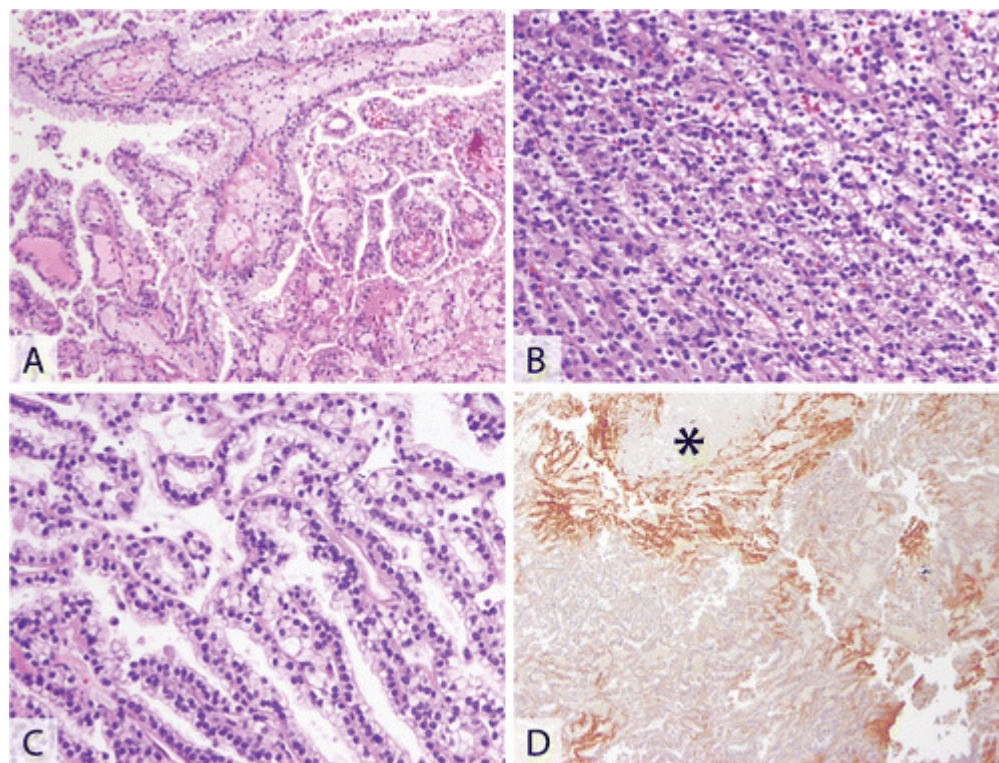


[Close](#) [Print](#)[\[previous\]](#) [\[next\]](#)

- [High-Resolution Image](#) (1168KB)

**Figure 2.**

Clear cytoplasm is almost always seen at least focally in type 1 papillary renal cell carcinoma, leading to possible diagnostic dilemmas or to misinterpretations as a “mixed” tumor. A, A classic example with abundant foamy macrophages within the fibrovascular cores. Note the “pale” or clear quality of the cytoplasm of the neoplastic cells. B, Solid growth and cytoplasmic clearing can also be seen; note the absence of the characteristic blood vessels usually seen in clear cell renal cell carcinoma. C, In some cases with clear cytoplasmic features and papillary growth, foamy macrophages are absent. D, Immunohistochemistry for carbonic anhydrase IX (CA9) is usually perinecrotic (asterisk [*] indicates necrosis) or patchy (hematoxylin-eosin, original magnifications $\times 100$ [A] and $\times 200$ [B and C]; original magnification $\times 40$ [D]).

[\[previous\]](#) [\[next\]](#)