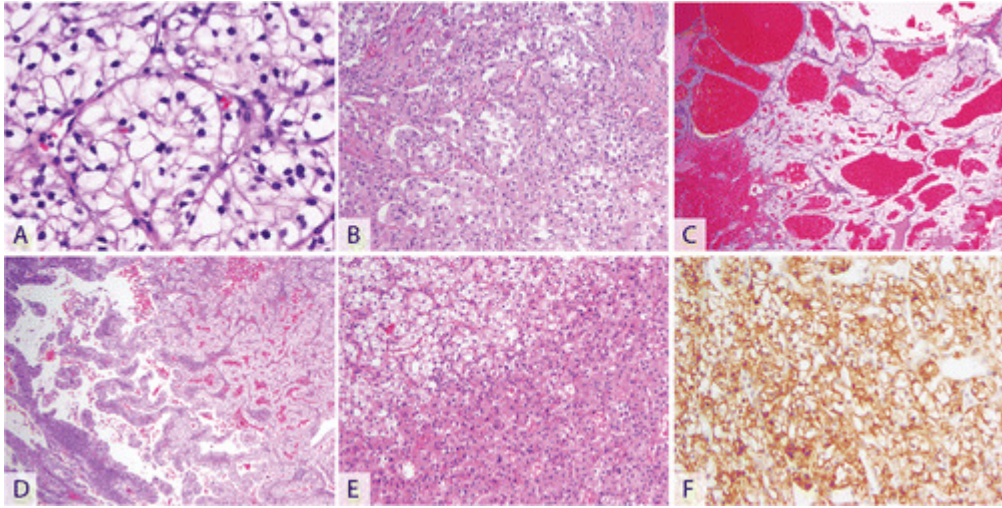


Close Print

[\[next\]](#)

- [High-Resolution Image](#) (1092KB)



**Figure 1.**

The spectrum of microscopic findings seen in clear cell renal cell carcinoma. A, Typical appearance with characteristic delicate blood vessels, nested growth, and optically clear cytoplasm. B, High-grade cases often lack clear cytoplasm but the characteristic vasculature is maintained. C, A classic finding is intratumoral hemorrhage resulting in a “bloody glands” appearance. D, In some cases a pseudopapillary growth pattern can be seen, as shown in the left half of the picture. E, Many cases show a mixture of cells with clear cytoplasm (upper left) and cells with more eosinophilic, granular cytoplasm (lower right). F, Carbonic anhydrase IX (CA9) usually shows diffuse membranous positivity (hematoxylin-eosin, original magnifications  $\times 200$  [A],  $\times 100$  [B, and E and  $\times 40$  [C and D];  $\times 100$  [F].

[\[next\]](#)